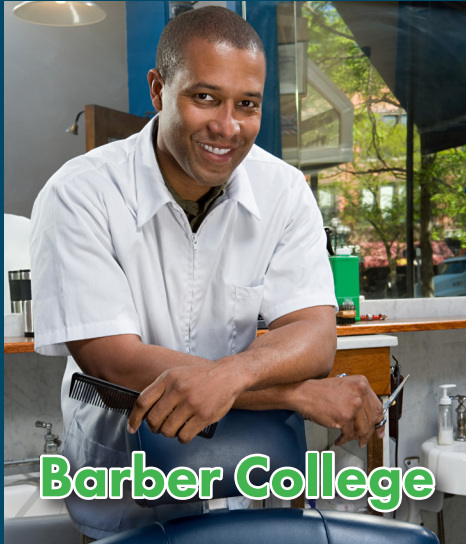




WORKFORCE  
EQUITY  
INITIATIVE

SPONSORED  
PROGRAMS



Barber College

The Workforce Equity Initiative (WEI) project is funded through ICCB to support qualified participants through the completion of short-term educational opportunities leading to employment. Benefits of the grant include financial and technology assistance, tutoring, academic and employment advising, and more.

**FREE for Qualified Applicants!**

Anita Barnett-Clemons, WEI-Project Manager  
Call (708) 596-2000 ext. 2413, email [workforceequity@ssc.edu](mailto:workforceequity@ssc.edu)  
or visit [ssc.edu/wei](http://ssc.edu/wei) for more information.

**Enrolling Now!**



Community  
Health  
Worker

Medical  
Assistant



Basic  
Nursing  
Assistant



Pharmacy  
Technician



Solar  
Photovoltaic



Forklift  
CDL



Occupational  
Therapy  
Assistant

Patient  
Care  
Technician  
EMT



**This is Success.**

SOUTH SUBURBAN COLLEGE